



**EARLES**  
TRUSTED SINCE 1935



6, Flat 1 Church Street  
Alcester  
B49 5AJ  
£750 PCM



Available immediately, a charming one-bedroom ground floor apartment situated in the centre of the historic market town of Alcester. The property boasts wonderful views of St. Nicholas Church and the beautiful surrounding historic architecture.

The accommodation is conveniently arranged on a single level and includes an entrance hall, a fully equipped kitchen, a spacious living room, a comfortable double bedroom, and a family shower room.

### Living Room

12'4" x 17'3" (3.77m x 5.27m)

Having a sash window with views of St. Nicholas Church, a centrally located blocked-up fireplace, and an exposed timber beam. Doorway leading to;

### Bedroom

10'6" x 12'1" (3.22m x 3.7m)

A generously sized double bedroom, having a sash window overlooking St. Nicholas Church, exposed ceiling timbers and a fitted wardrobe.

### Kitchen

8'10" x 7'2" (2.7m x 2.2m)

The kitchen includes a variety of wall and base units complemented by laminate worktops. It is equipped with a stainless steel sink and mixer tap, and the splashbacks are tiled. A UPVC double glazed window is located at the rear.

Integrated appliances include a single oven, a four-ring gas hob, and a fridge freezer. There is also space available for a washing machine. Additionally, a newly fitted wall-mounted Worcester Bosch boiler is present.

### Shower Room

11'1" x 4'7" (max) (3.4m x 1.4m (max))

Ceramic tiles on the floor and all four walls. WC and a hand basin that are inset within a vanity unit, a single shower with an electric shower installed above, and a heated towel rail.

### Additional Information

#### Services:

Mains drainage, electricity and water are connected to the property. Gas central heating.

Ultrafast Broadband Speed is available in the area, with predicted highest available download speed 1800 Mbps and highest available upload speed 220 Mbps. Mobile signal coverage (both voice and data) is available from the four major providers (O2, EE, Three, and Vodafone), with outdoor availability being rated 'Likely' and the indoor availability being rated 'Likely' and 'Limited'. For more information, please visit: <https://checker.ofcom.org.uk/>. For more information visit: <https://checker.ofcom.org.uk/>

#### Council Tax:

Stratford-on-Avon District Council - Band A

#### Flood Risk:

This location is in 'Flood Zone 1' (Low Probability). For more information, please visit: <https://www.gov.uk/check-long-term-flood-risk>.

#### Viewing:

Strictly by prior appointment with Earles (01789 330 915/01564 794 343).

A dilapidations deposit is applicable, equivalent to 1 months rent - this will be

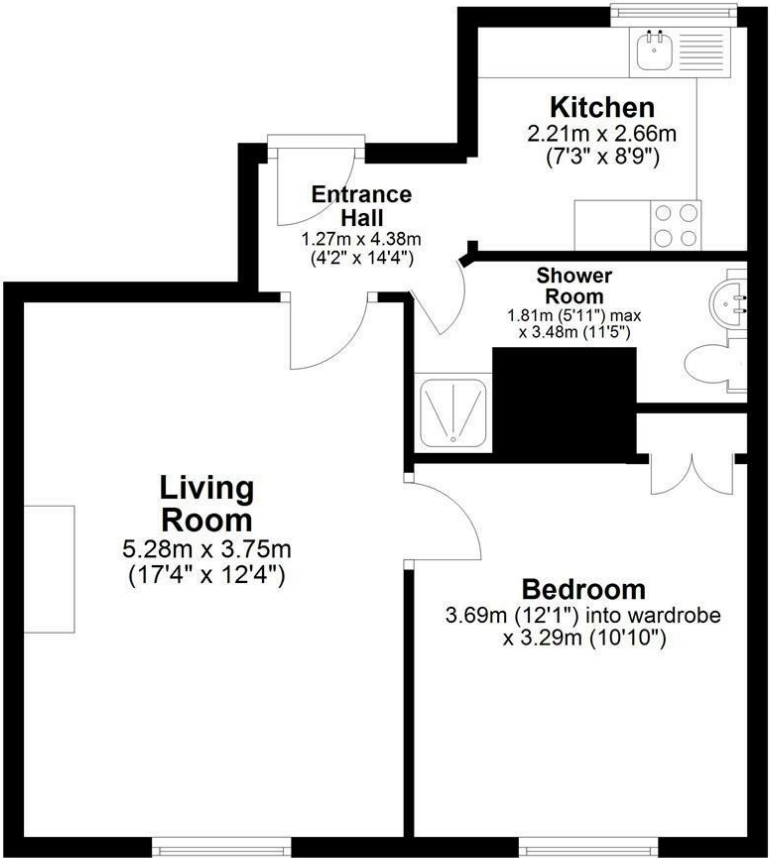
registered with the TDS ([www.tds.gb](http://www.tds.gb))

Earles is a Trading Style of 'John Earle & Son LLP' Registered in England. Company No: OC326726 for professional work and 'Earles Residential Ltd' Company No: 13260015 Agency & Lettings. Registered Office: Carleton House, 266 - 268 Stratford Road, Shirley, West Midlands, B90 3AD.



Ground Floor Flat

Approx. 45.4 sq. metres (489.2 sq. feet)



Total area: approx. 45.4 sq. metres (489.2 sq. feet)

